

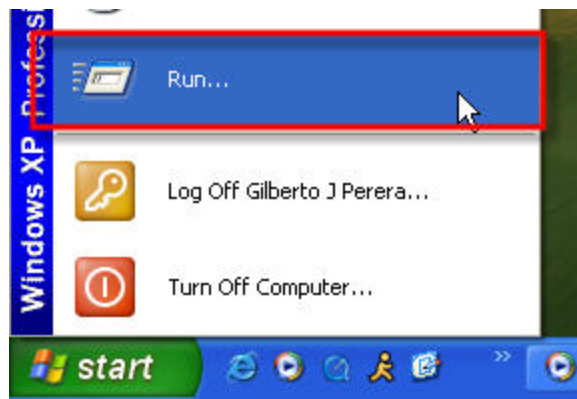
Guide - How to Add A 'Copy To' and 'Move To' Command to Your Windows XP Context Menu

This step-by-step visual guide will show you how to add the 'Move To' and 'Copy To' command to your context menu. With these two options you won't have to copy and paste from one directory to the other, you can simply right click on the file you wish to copy/move select either option resulting in a dialog box that will prompt you for the destination of the file you're moving/copying.

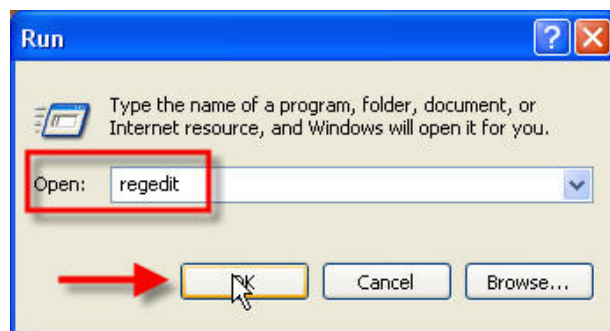
This little timesaver requires the user to modify the registry, however in this tutorial we are not going to directly go into the registry and modify it (there's too much room for error, and an error in the registry could spell disaster) so instead I have created two registry entries that contain the necessary information to input those values and give you two commands with little effort. Before we modify the registry, we will first make a backup of your registry in case you wish to revert to your current state. Let me know if you have any comments or suggestions for this guide.

You will need [this file](#) to complete this tutorial.

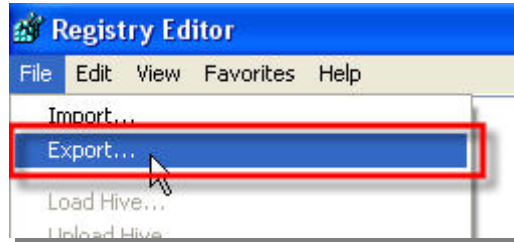
1. Go to 'Start > Run'



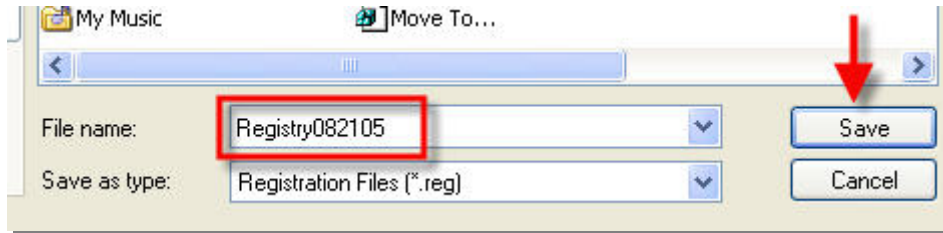
2. Type in 'regedit' and click 'Ok' this will open up the Windows Registry Editor



3. Go to 'File > Export'

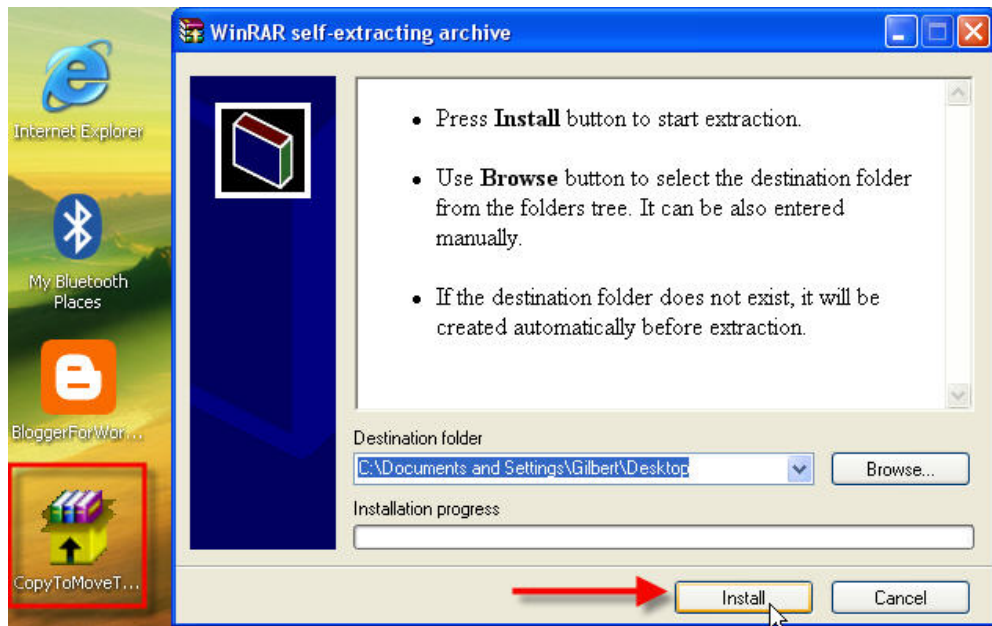


4. When the Export dialog box opens, name the file 'Registry[Today's Date]' this way you can keep track of the file, if you wish you can name it whatever you'd like. Click 'Save' It will take a minute or so to process; after it is done you can close the Registry Editor.

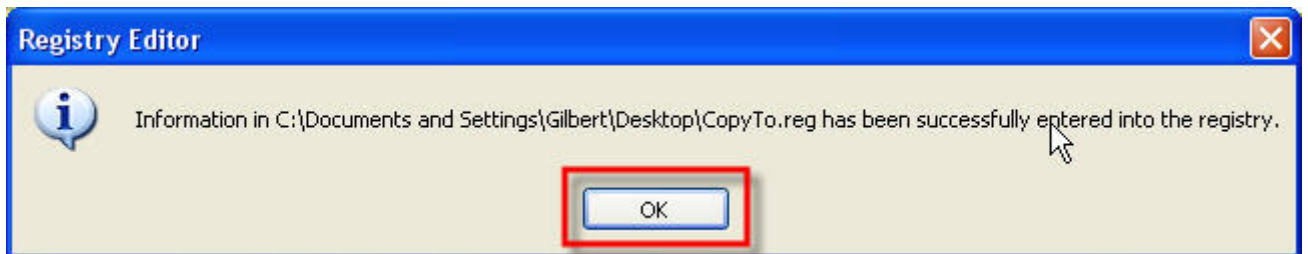
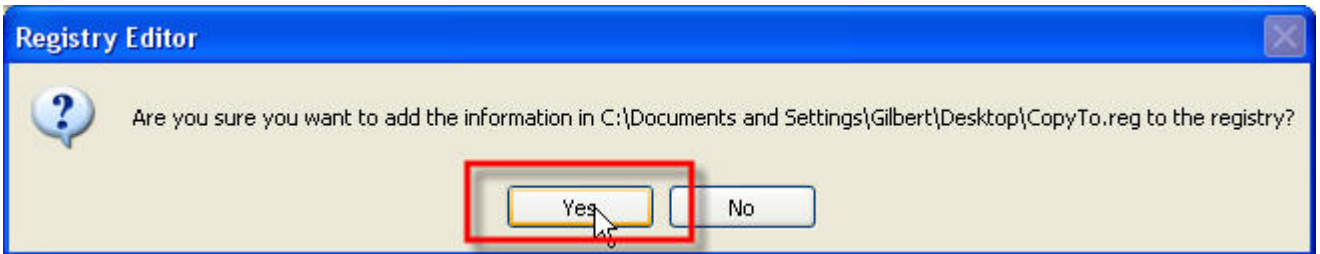
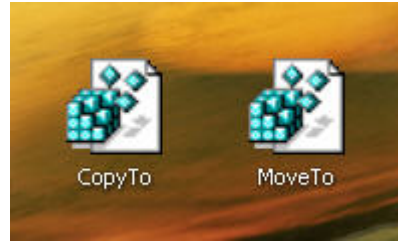


5. If you haven't done so already download [this file](#) and save it to your desktop.

6. Double-click 'CopyToMoveToRegistryEntries.exe' and extract it to your desktop.



7. You should see two registry entries residing on your desktop, double-click the one's you wish to use, you will be asked if you wish to add these entries to your registry, click 'Yes' and then click 'Ok' on the next box that appears, you're set.



8. Now right click on any file and you'll notice that the commands you added are now included in that menu. Enjoy!

